

PLC130 LAB 2.2: EVENT TASKS

Student Name: _____

Student ID: _____

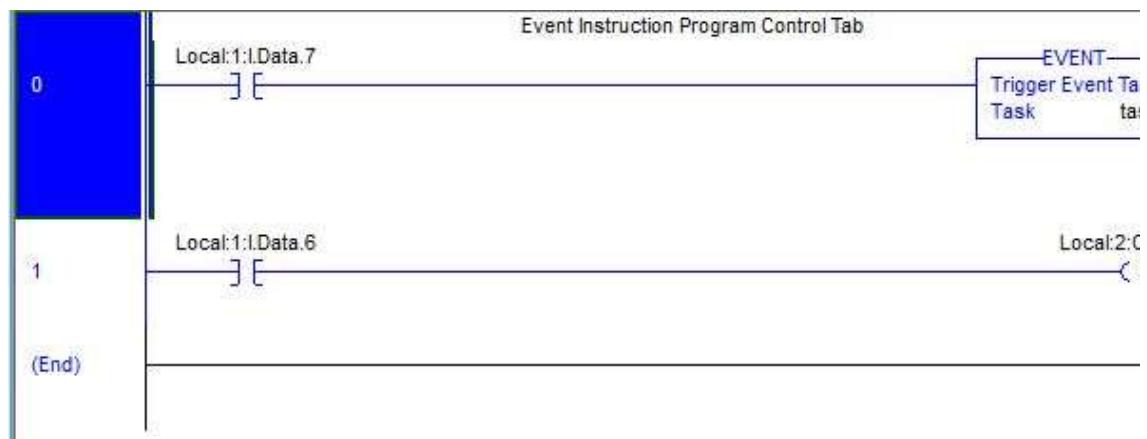
LAB OUTCOMES:

1. Explain various tasks found in the controller organizer window
2. Explain how to change the parameters for a continuous task
3. Explain how to create a new event task
4. Explain how to change the parameters for a event task
5. Explain how a Trigger Event Task instruction works.

LAB PROCESS:

Download the project “Compact_Module_5_Ex2_Event_Task.ACD” file, go online and put the CompactLogix into RUN mode.

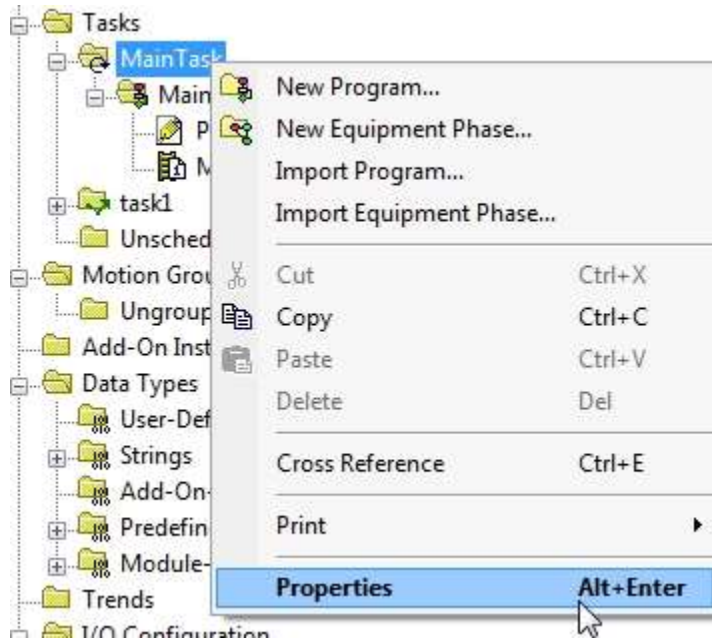
Part 1



1. Monitor the MainRoutine
Does SS6 turn ON PL0 on the demo board?
Is the logic running in the MainRoutine?

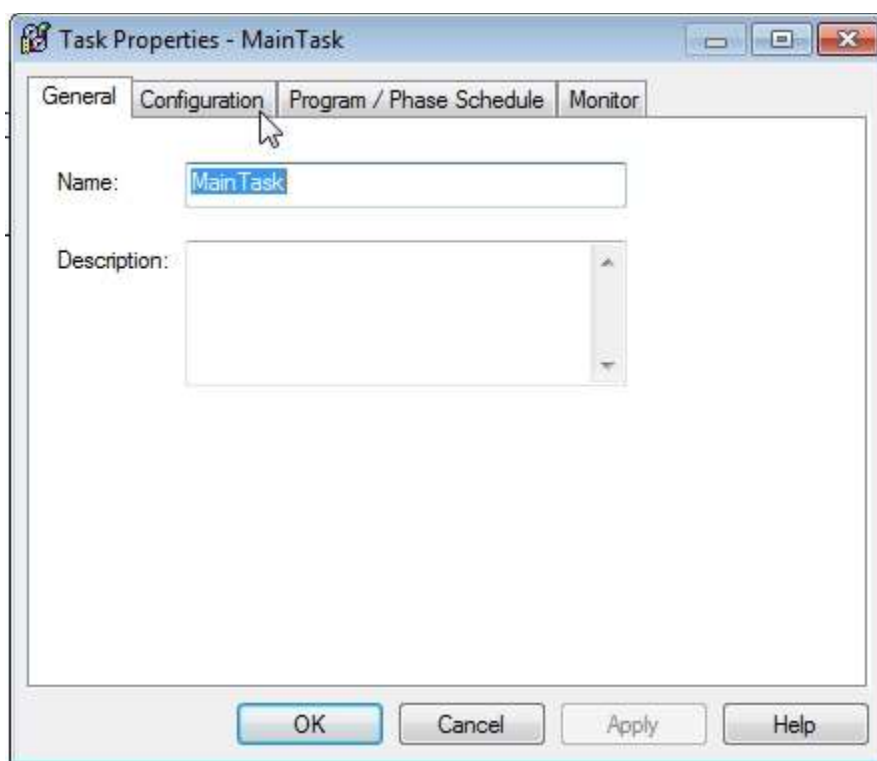
2. What type of Task is the MainTask?

Hint: Right Mouse Click on the Properties selection for MainTask.

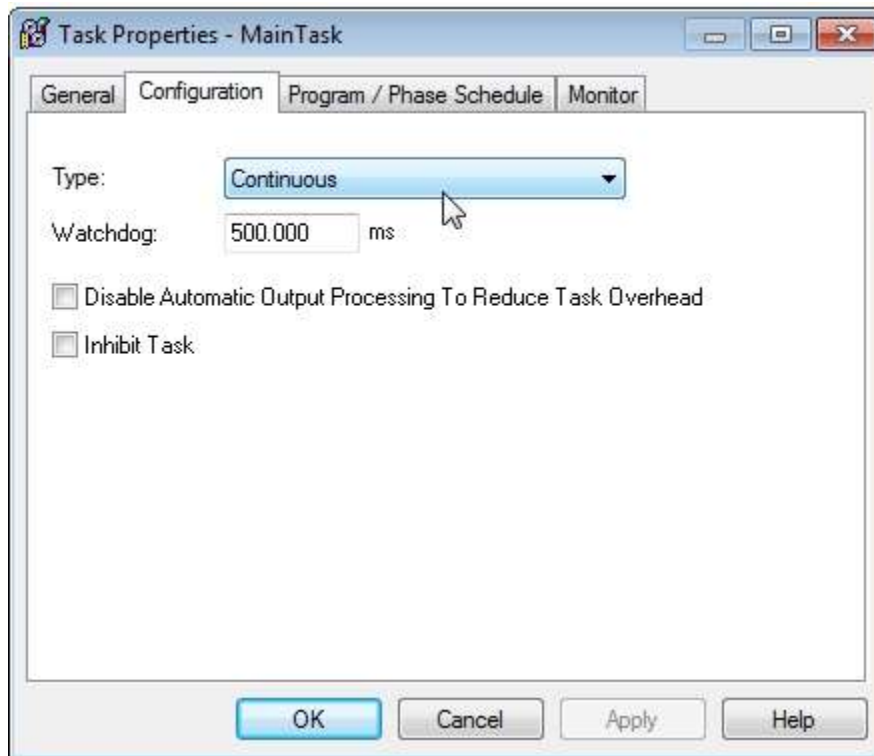


Note: Icon for MainTask

Left Mouse Click on the Configuration tab



View Type information



3. Ensure SS7 is turned to the left – OFF.

Monitor the R1 routine.



Toggle SS5 does PL7 change states?

Is the logic in R1 being scanned?

4. In the MainRoutine, toggle SS7 to the right – ON

In the R1routine, toggle SS5 does PL7 change states?

Is the logic in R1 being scanned?

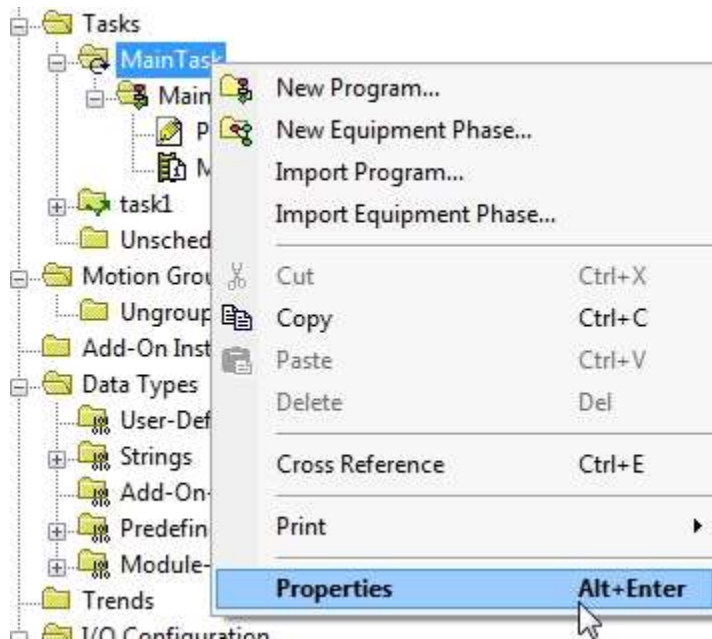
In the MainRoutine, toggle SS7 to the left – OFF

In the R1routine, toggle SS5 does PL7 change states?

Is the logic in R1 being scanned?

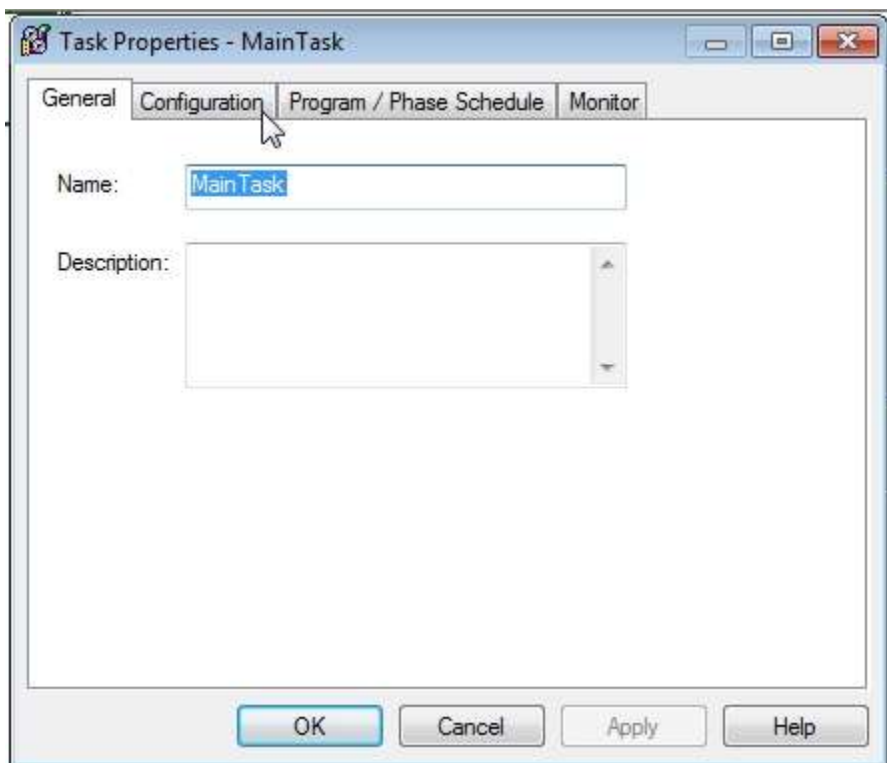
5. What type of Task is task1

Hint: Right Mouse Click on the Properties selection for T1 task.

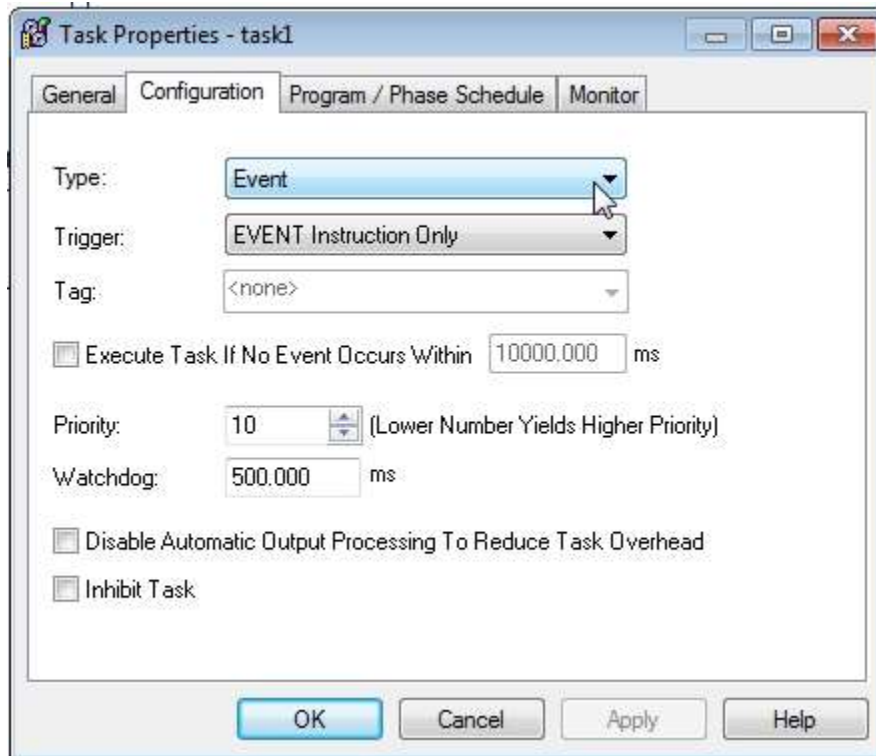


Note: Icon for task1 task

Left Mouse Click on the Configuration tab



View Type information



What is the Type setting for the task1 task?

What is the Trigger setting for the task1 task?

Where is the EVENT instruction located in the project file?

What are the other types of triggers?

What is the range of the Priority setting?

A task with a Priority setting of _____ will be the highest priority task.

6. Explain when the routines in an Event Tasks are scanned?

The outcomes of this exercise (listed on page 1) specifies the skills that the Student must demonstrate to the Instructor. Once the Instructor is satisfied with the demonstration of Knowledge & Skills by the individual student, they will sign this document (for the student), then enter a 100% into the Hands-On Lab grade in Sakai.

I verify that this student has completed all of the requirements of this Hands-On Assessment:

Student Name: _____

Faculty Signature: _____ Date: _____

DOL DISCLAIMER:

This product was funded by a grant awarded by the U.S. Department of Labor's Employment and Training Administration. The product was created by the grantee and does not necessarily reflect the official position of the U.S. Department of Labor. The Department of Labor makes no guarantees, warranties, or assurances of any kind, express or implied, with respect to such information, including any information on linked sites and including, but not limited to, accuracy of the information or its completeness, timeliness, usefulness, adequacy, continued availability, or ownership.



This work is licensed under a [Creative Commons Attribution 4.0 International License](https://creativecommons.org/licenses/by/4.0/).